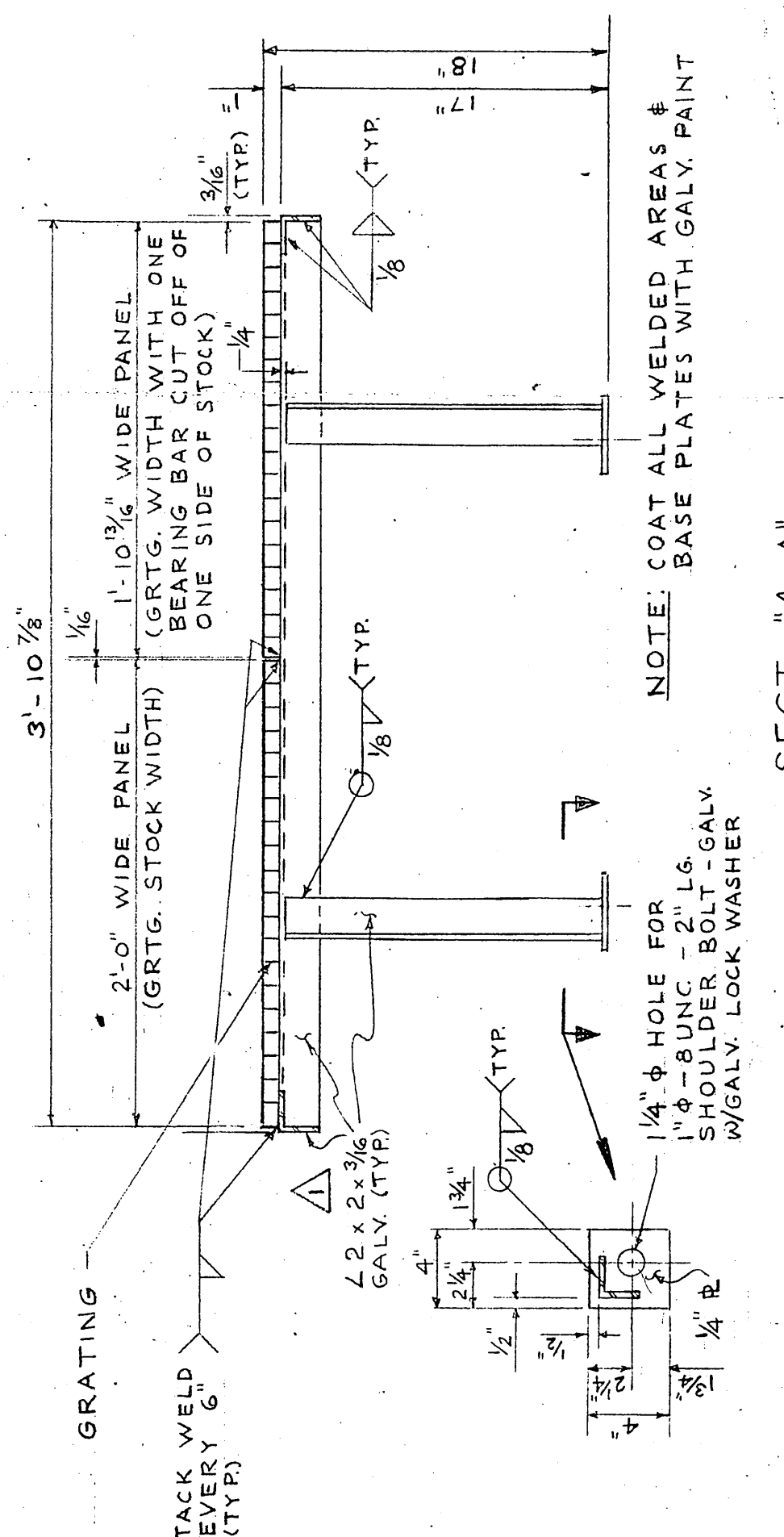
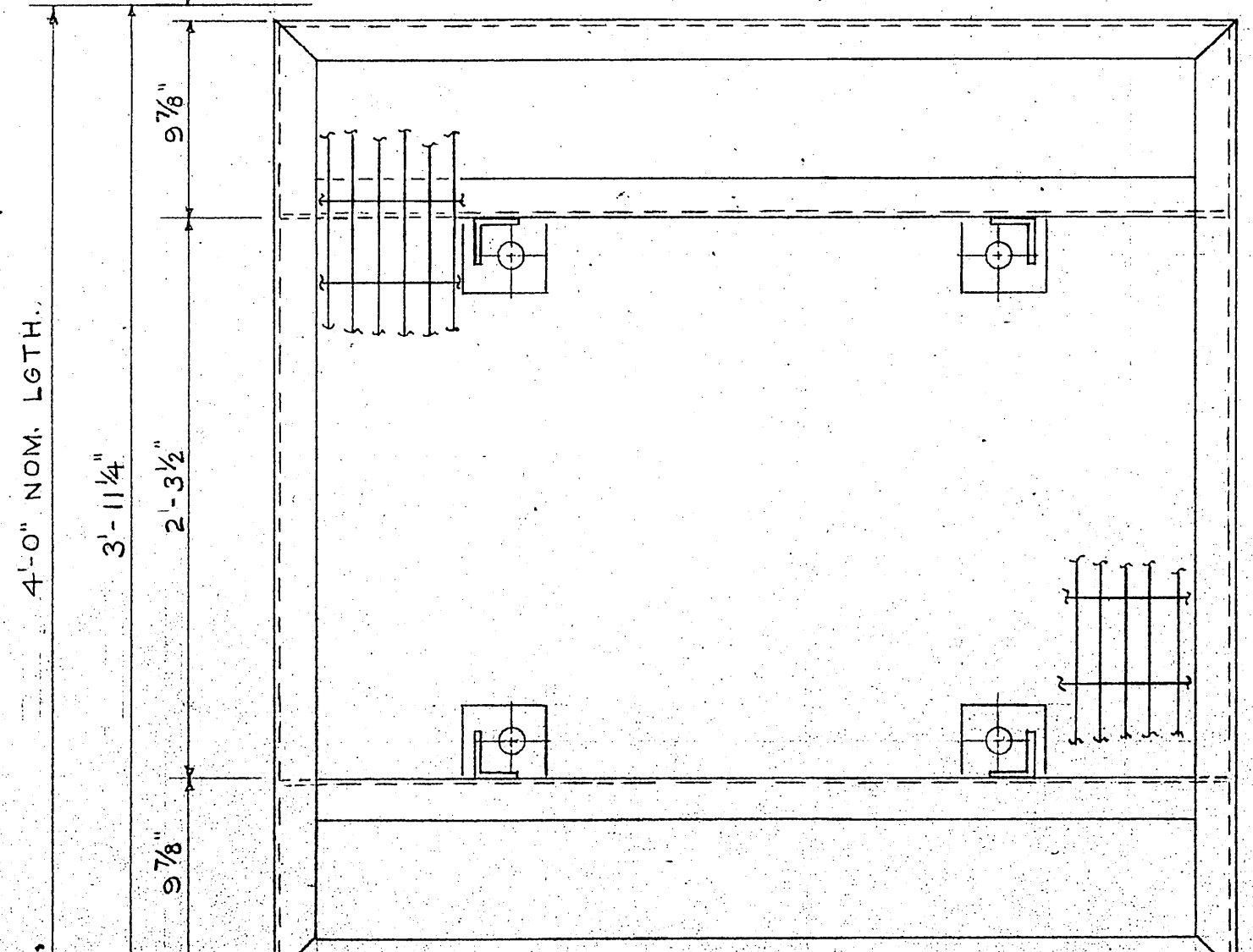


PG. NO. (1 SHIP)	QUAN.	DESCRIPTION	COST	ITEM P.O. NO.	VENDOR	DATE RECD
1	1500 B'	GRATING, GALV. BORDEN TYPE, W/SE 12S #4, IN 2'-0" SECTIONS		545	STANDARD SUPPLY	
2	2400 L.F.	L 2 x 2 x 3/16, GALV. STL.				
3	420 L.F.	1/4" R, STL.				
4	374	SHOULDER BOLT, 1"-8 UNC 2 LG. GALV. STL.				
5	374	1" LOCK WASHER, GALV. STL.				



SECT. "4-A"



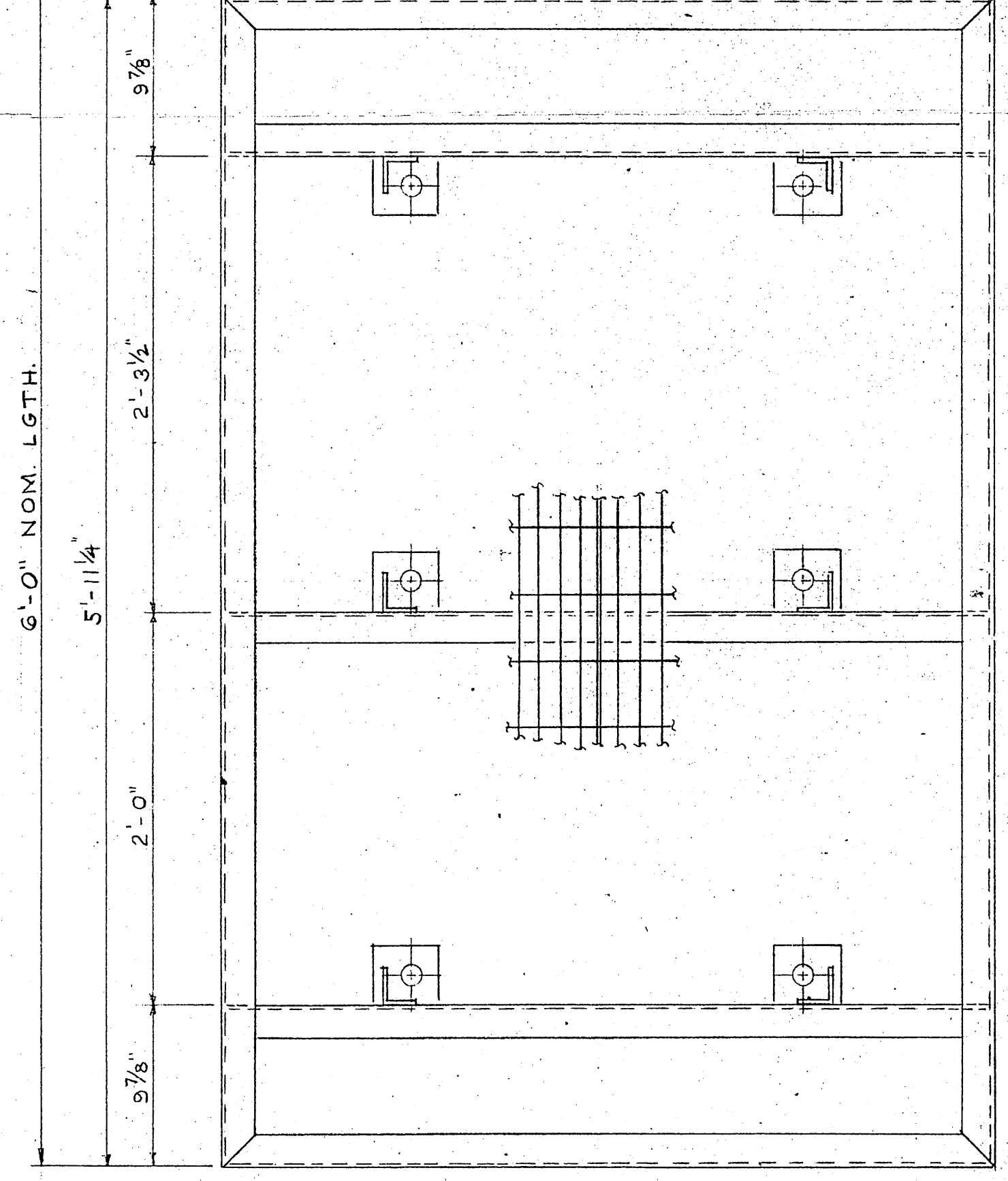
UNIT WEIGHT = 182 #

4' x 4' GRATING UNIT

FOR DETAILS NOT SHOWN SEE PLAN "4-B"

6 REQ'D PER SHIP (96 #/SHIP)

PLAN "1-B"



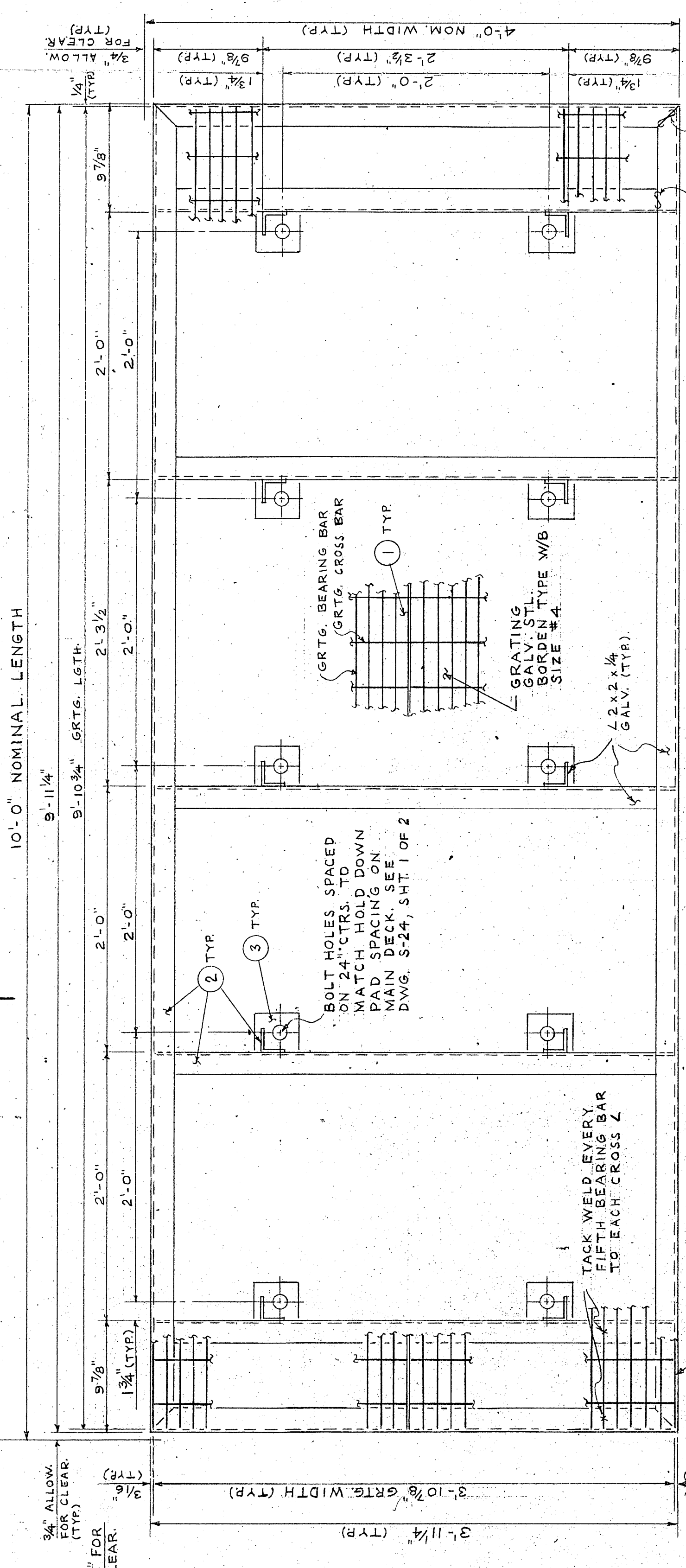
UNIT WEIGHT = 263 #

4' x 6' GRATING UNIT

FOR DETAILS NOT SHOWN SEE PLAN "4-B"

5 REQ'D PER SHIP (120 #/SHIP)

PLAN "2-B"



UNIT WEIGHT = 425 #

4' x 10' GRATING UNIT

32 REQ'D PER SHIP (1280 #/SHIP)

PLAN "4-B"

REV	DESCRIPTION	DATE	BY
1	SECT. "4-A", CORRECTED L SIZE TO L 2 x 2 x 3/16	9/9/72	CJR

APPROVALS

USCG

USPHS

**OFFICE COPY**

U.S. NAVAL SHIP SYSTEMS COMMAND  
WASHINGTON D.C. 20380

OCEANOGRAPHIC RESEARCH SHIP  
AGOR (UTILITY) CLASS

HALTER MARINE SERVICES, INC.  
P.O. BOX 68666 NEW ORLEANS, LA. 70169

PORTABLE GRATING UNITS  
FOR MAIN DECK HOLD DOWNS

SCALE:	1 1/2" = 1'-0"	DATE:	9-12-73
DRAWN BY:	C.J.R.	CK'D BY:	C.J.R.
HALTER NO.:	375 - 376	HALTER:	2187 - 2188
NAVSHIPS NO.:	AGOR 21-520-002	JOB NO.:	S - 24
		REV.:	SHT. 2 OF 2

00071